



---

**PRODUCT CATALOG**



Photo credit: Todd Kaplan

Lighting design: Eric Wade



## TABLE OF CONTENTS

impression X Series	page 05 - 18
impression Laser	page 19 - 20
impression Spot & Wash One	page 23 - 26
VOLKS   LICHT Spot	page 29 - 30
Creation II series	page 33 - 38



Photo credit: Bree Kristel Clarke

Lighting design: Paul 'Arlo' Guthrie



## impression<sup>®</sup> **X SERIES**

impression X1  
impression X4S  
impression X4  
impression X4 L  
impression X4 XL  
impression X4 Bar

page 05 - 06  
page 07 - 08  
page 09 - 10  
page 11 - 12  
page 13 - 14  
page 17 - 18

# impression<sup>&</sup> X1

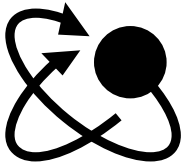
The impression X1 differs from other products in GLP's X range, by featuring 4 high powered, 15 Watt, RGBW LED's with a narrow fixed beam output that offers continuous pan and tilt motion, in a compact housing.

The fixed beam optics are interchangeable between different beam angles from the standard 7 degrees. The compact base of the impression X1 houses Neutrik Powercon in and thru connectors for easy daisy chaining of multiple fixtures, whilst the power supply is fully auto sensing from 100-240 V, 50/60 Hz.

Lighting design: Paul Hoffman



CONTINUOUS



PAN / TILT  
MOVEMENT





## TECHNICAL DATA

### LIGHT SOURCE

4 high power RGBW LEDs  
50,000 hours life time

### OPTICAL SYSTEM

Interchangeable lens  
carrier with 7° beam angle  
Optional 25° lens available  
Quad color LED's

### MOVEMENT

8 or 16 bit resolution  
Position feedback  
Maximum continuous rotation  
speed:  
Pan: 75.3768 revolutions per  
minute (= 0.796 seconds per  
revolution)  
Tilt: 74.6268 revolutions per  
minute (= 0.804 seconds per  
revolution)

### SHUTTER / DIMMER

Continuous dimmer 0-100%  
Variable speed strobe of 1-14 Hz.  
Random strobe effect  
Pulse effects

### CONTROL

DMX-512 protocol  
Variable color temperature  
correction (CTC) from  
2,700K to 10,000K  
Very quiet temperature  
controlled ventilation system  
Backlit graphic LCD menu with  
4 illuminated buttons  
Over-temperature protection

### POWER SUPPLY

Power consumption:  
100VA (Watt)  
Power input: Auto sensing  
100-240 VAC / 50-60Hz  
Fuse protection: Microfuse  
20mm, T 5A

### CONNECTORS

DMX: XLR 5 pin  
Mains: Neutrik Powercon  
(In & Thru)

### OPERATING CONDITIONS

Maximum ambient  
temperature: 113°F / 45°C

### MOUNTING OPTIONS

3 M10 sockets for clamp  
2 attachment points  
for safety wires

### SHIPPING

Cardboard box  
6 way tourpack complete with  
half couplers and flight case  
8 way tourpack complete with  
half couplers and flight case

### HOUSING COLORS

Standard colors are  
black, silver & white.  
For other colors please  
contact sales department.

### DIMENSIONS

Length x width x height  
(head vertical):  
7.6 x 5.5 x 12.2 in /  
195 x 140 x 255 mm

### NET WEIGHT

6.8 lbs / 3.1 kg

# impression<sup>&</sup> X4S

The small size of the impression X4S does not give way to any compromise, as the heart of the impression X4S features seven high powered RGBW LED's, each rated at 15 Watts, that combine to give a homogenous output across its entire beam range. Its 7° to 50° zoom offers the flexibility of a tight beam mode thru to a smooth edged wash light.

Full control over the quad color LED's is done via DMX, with additional color temperature control. The X4S features precise full range dimming with no color drift at low intensities and a variable speed electronic strobe.

Adding to its unique feature package is the ability to control the intensity of each LED individually, allowing you to program unique looks and animations on the fly.

Physically the impression X4S measures just 12 inches tall and weighs just 12 lbs., and can be rigged in any orientation. 16 Bit movement control is provided through a pan range of 660° and a tilt range of 260°.

The elegant base design of the X4S contains all data and power connections, with an auto sensing power supply from 100-240V at 50 or 60 Hz.



**wfx** NEW PRODUCT  
**AWARDS**  
**TECHNOLOGY**  
2 0 1 3  
**WINNER**



Photo credit: Ralph Larman

Lighting design: Thomas Gerdon





Photo credit: Lloyd Bishop@NBC

Lighting design: Kathleen Dobbins

*"I still wanted the ability to have fixtures on the floor for a more dynamic look, so finding a compact fixture with enough punch and features to help me create a new look for every band was my priority. The impression X4 S does just that; with its small fixture size and fantastic zoom it has provided exactly the versatility I was looking for."*

*Kathleen Dobbins, Lighting director*



## TECHNICAL DATA

### LIGHT SOURCE

7 high power RGBW LEDs  
50,000 hours life time

### OPTICAL SYSTEM

Motorized zoom system with  
7° to 50° beam angle  
Quad color LED's

### MOVEMENT

8 or 16 bit resolution  
Position feedback  
Maximum speed: 660° pan  
in 2 sec, 260° tilt in 1 sec  
High precision 3 phase  
stepping motor control

### SHUTTER / DIMMER

Continuous dimmer 0-100%  
Variable speed  
Strobe of 1-25 Hz  
Random strobe effect  
Pulse effects

### CONTROL

DMX-512 protocol  
Macro operation of  
individual lenses  
Very quiet temperature  
controlled ventilation system  
Internal color presets,  
and variable CTO control  
from 2,700K-10,000K  
Backlit graphic LCD menu  
Over-temperature protection  
Color calibration feature

### POWER SUPPLY

Power input: Auto sensing  
100-240 VAC / 50-60Hz  
Power consumption:  
150 Watt max.  
Fuse protection: Microfuse  
20mm, T 2A

### CONNECTORS

DMX: XLR 5 pin  
Mains: Neutrik Powercon  
(In & Thru)

### OPERATING CONDITIONS

Maximum ambient  
temperature: 113°F / 45°C

### MOUNTING OPTIONS

3 M10 sockets for clamp  
2 attachment points  
for safety wires

### SHIPPING

Cardboard box  
6 way tourpack complete with  
half couplers and flight case  
8 way tourpack complete with  
half couplers and flight case

### HOUSING COLORS

Standard colors are  
black, silver & white.  
For other colors please contact  
sales department.

### DIMENSIONS

Length x width x height  
(head vertical):  
8.6 x 6.1 x 12.2 in /  
220 x 155 x 310 mm

### NET WEIGHT

11.4 lbs / 5.2 kg

# impression<sup>&</sup> X4

The impression X4 features 19 high power RGBW LEDs, each rated at 15W with a 7° - 50° zoom range. The housing design is based on the legendary, and award winning, impression 90 and 120RZ fixtures including their baseless design and small footprint.

The brand new optical system gives a well defined beam, complete with hard edge in the lower zoom range whilst remaining absolutely homogenous and soft edged at wider angles.

RGBW color mixing, variable CTO and a finely tuned dimming curve are standard in the impression X4.

The impression X4 features individually controllable LEDs allowing a range of different patterns to be created and displayed on the front lenses, including arrows, numbers, letters and much more, either from stock patterns or through user created patterns.



Photo Credit: Justin Schaible

Lighting design: Marc Janowitz



*"The impressions have the best color I have seen out of a moving head in many years. They are fast and interesting to look at, lightweight, and have low power requirements — which is the case with most LED lights — but the difference is that these have the qualities of 'real' light."*

Steven Cohen, Lighting designer



## TECHNICAL DATA

### LIGHT SOURCE

19 high power RGBW LEDs  
50,000 hours life time

### OPTICAL SYSTEM

Motorized zoom system with  
7° to 50° beam angle  
Quad color LED's

### MOVEMENT

8 or 16 bit resolution  
Position feedback  
Maximum speed:  
660° pan in 2 sec  
260° tilt in 1 sec  
High precision 3 phase  
stepping motor control

### SHUTTER / DIMMER

Continuous dimmer 0-100%  
Variable speed strobe of 1-25 Hz.  
Random strobe effect  
Pulse effects

### CONTROL

DMX-512 protocol  
Macro operation of  
individual lenses  
Very quiet temperature  
controlled ventilation system  
Internal color presets,  
and variable CTO control  
from 2,700K - 10,000K  
Backlit graphic LCD menu with  
4 illuminated buttons  
Over-temperature protection  
Color calibration feature

### POWER SUPPLY

Power consumption:  
350VA (Watt)  
Power input: Auto sensing  
100-240 VAC / 50-60Hz  
Fuse protection: Microfuse  
20mm, T 5A

### CONNECTORS

DMX: XLR 5 pin  
Mains: Neutrik Powercon

### OPERATING CONDITIONS

Maximum ambient  
temperature: 113°F / 45°C

### MOUNTING OPTIONS

Omega bracket attachment  
2 attachment points  
for safety wires  
Upright: Floor stand (supplied)  
with brackets for ratchet strap  
Hanging: M10 socket for half  
coupler, or other clamp

### SHIPPING

Cardboard box  
4 way tourpack complete with  
half couplers and flight case  
6 way tourpack complete with  
half couplers and flight case

### HOUSING COLORS

Standard colors are  
black, silver & white.  
For other colors please  
contact sales department.

### DIMENSIONS

Length x width x height  
(head vertical):  
9.4 x 13.4 x 15.2 in /  
242 x 340 x 385 mm

### NET WEIGHT

16.5 lbs / 7.5 kg

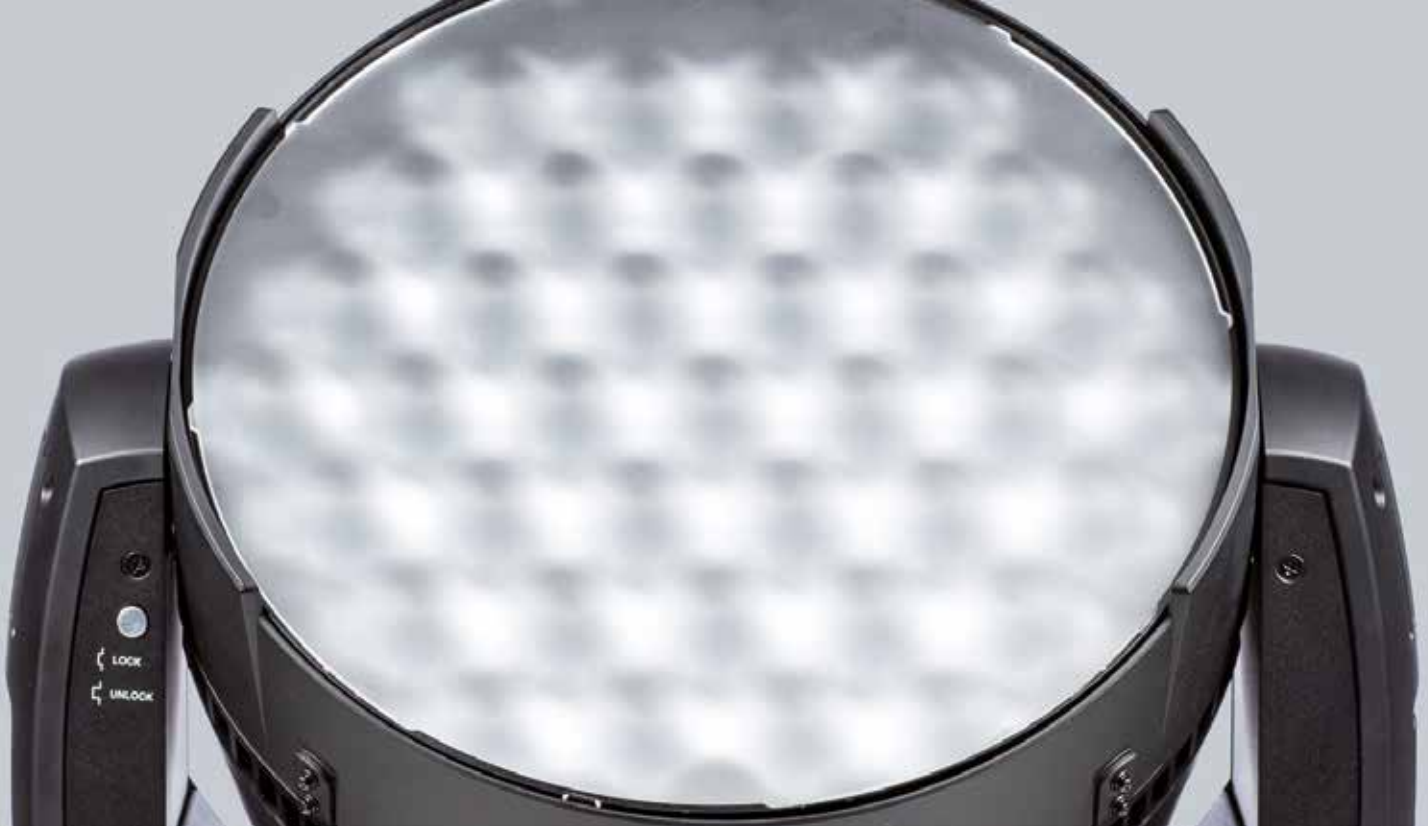
# impression<sup>&</sup> X4 L

The impression X4 L features 37 RGBW LED's and offers full pixel mapping for ultimate graphical effects. But it doesn't stop there, as the X4 L also offers a super fast 7:1 degree zoom from 7° to 50°; an indexing front accessory allowing for placement of beam shapers and similar options; smooth full range dimming with no color shift, all supported by the high output 15W LED sources that form the fixtures engine.

To complement this great feature set, the impression X4 L also brings full range 16 bit pan and tilt movement, electronic strobe functionality, variable color temperature correction control, and very quiet operation, all in the sleek baseless design that has become a synonymous part of the GLP impression product range.



Lighting design: Henning Schletter



Optional beam shaper



## TECHNICAL DATA

### LIGHT SOURCE

37 high power RGBW LEDs  
50.000 hours life time

### OPTICAL SYSTEM

Motorized zoom system with  
7° to 50° beam angle  
Ultra fast zoom  
Optional beam-shaper  
Quad color LED's

### MOVEMENT

8 or 16 bit resolution  
Position feedback  
Maximum speed:  
660° pan in 2 sec  
260° tilt in 1 sec  
High precision 3 phase  
stepping motor control

### SHUTTER / DIMMER

Continuous dimmer 0-100%  
Variable speed strobe of 1-10 Hz.  
Random strobe effect  
Pulse effects

### CONTROL

DMX-512 protocol  
Pixel control options:  
- Macro operation -  
pattern mode  
- Free control of every  
pixel, color and intensity  
Very quiet temperature  
controlled ventilation system  
Internal color presets,  
and variable CTO control  
from 2,700K - 10,000K  
Backlit graphic LCD menu with  
4 illuminated buttons  
Battery operation of menu  
Over-temperature protection  
Color calibration feature

### POWER SUPPLY

Power consumption:  
900VA (Watt)  
Power input: Auto sensing  
100-240 VAC / 50-60Hz  
Fuse protection: Microfuse  
20mm, T 5A

### CONNECTORS

DMX: XLR 5 pin  
Mains: Neutrik Powercon

### OPERATING CONDITIONS

Maximum ambient  
temperature: 113°F / 45°C

### MOUNTING OPTIONS

Omega bracket attachment  
2 attachment points  
for safety wires  
Upright: Floor stand (supplied)  
with brackets for ratchet strap  
Hanging: M10 socket for half  
coupler, or other clamp

### SHIPPING

Cardboard box  
2 way tourpack complete with  
half couplers and flight case

### HOUSING COLORS

Standard colors are  
black, silver & white.  
For other colors please  
contact sales department.

### DIMENSIONS

Length x width x height  
(head vertical):  
16.9 x 7.3 x 20.9 in /  
430 x 185 x 530 mm

### NET WEIGHT

32.8 lbs / 14.9 kg

# impression<sup>&</sup> X4 XL

The GLP impression X4 XL uses an incredible array of 55 RGBW LEDs, each rated at 15 watts, coupled with a highly efficient zoom range from a tight 7° to a wide coverage 50°. It produces a massive amount of light that will throw for extremely long distances.

The optical system, originally designed for the GLP impression X4, gives a sharply defined beam complete with hard edge in the lower zoom range whilst remaining absolutely homogenous and soft edged at wider angles. This is all contained within the stylish baseless design that has become synonymous with the GLP impression series. The output is a full RGBW color system with additional variable CTO control. Also featured are an electronic strobe with variable speed, smooth full range dimming and 16 bit pan and tilt.

The impression X4 XL features individually controllable LEDs allowing a range of different patterns to be created and displayed on the front lenses, including arrows, numbers, letters and much more, either from stock patterns or through user created patterns.



*"They have an enormous light output and the quality of the colors is as good as the X4. The zoom range is really impressive — you can use them both as a beam light and as a stage wash — and they work well in both modes; the pan/tilt speed is excellent —surprisingly so, as you don't expect this when you see the size of the fixture....But the biggest advantage is the output — they really have an extreme lighting output which you don't find in other LED fixtures."*

*Thomas Gerdon, Lighting designer*

## TECHNICAL DATA

### LIGHT SOURCE

55 RGBW high power LEDs  
50,000 hours life time

### OPTICAL SYSTEM

Motorized zoom system with  
7° to 50° beam angle

### MOVEMENT

8 or 16 bit resolution  
Position feedback  
660° Pan / 260° Tilt  
High precision 3 phase  
stepping motor control

### SHUTTER / DIMMER

Continuous dimmer 0-100%  
Variable speed strobe of 1-25 Hz.  
Random strobe effect  
Pulse effects

### CONTROL

DMX-512 protocol  
Macro operation of individual  
lenses  
Very quiet temperature  
controlled ventilation system  
Internal color presets,  
and variable CTO control  
from 2,700K-10,000K  
Backlit graphic LCD menu  
Over-temperature protection  
Color calibration feature

### POWER SUPPLY

Power input: Auto sensing  
100-240 VAC / 50-60Hz  
Power consumption:  
1,100 Watt max.

### CONNECTORS

DMX Data: XLR 3 pin in/out  
DMX Data: XLR 5 pin in/out  
Mains: Neutrik Powercon

### OPERATING CONDITIONS

Maximum ambient temperature:  
113°F / 45°C

### MOUNTING OPTIONS

2 Omega brackets  
2 attachment points  
for safety wires  
Upright: Floor stand (supplied)  
with brackets for ratchet belt  
Hanging: M10 sockets for half  
couplers, or other clamps

### SHIPPING

Cardboard box  
2 way tourpack complete with  
half couplers and flight case

### HOUSING COLORS

Standard colors are  
black, silver & white.  
For other colors please  
contact sales department.

### DIMENSIONS

Length x width x height  
(head vertical):  
7.8 x 21.6 x 20.2 in /  
200 x 550 x 515 mm

### NET WEIGHT

52.91lbs / 24 kg

Lighting design: Matt Shimamoto



Photo credit: Ralph Larmann

Lighting design: Thomas Gerdon



Photo credit: Jessica Gilbert

Lighting design: Steven Cohen





# impression<sup>&</sup> X4 BAR

The GLP X4 Bar 10 and X4 Bar 20 are high performance battens offering flexibility to today's lighting designer across multiple applications.

High output RGBW LED's are packed tightly into a package that gives a full batten of light, with 20 LED's used in the 1 meter long X4 Bar 20 and 10 LED's used in the shorter 50 cm X4 Bar 10. High quality optics ensure a smooth, homogenized output across the batten through a broad pallet of pastel and saturated colors. This allows for subtle graduated fades, or for distinct color breaks between LED's. This is supported by GLP's exceptional dimming quality which ensures that there is no color shift when fading, just smooth even output.

DMX control offers full pixel mapping capabilities, controlling every color in each LED and allowing a multitude of dynamic fades and chases through intensities and colors.

The X4 Bar 10 and Bar 20 both feature a fast 7:1 ratio zoom ranging from 7° to 50° degrees, giving broad cyc and wall washes down to a tight light curtain. The X4 Bar also features a motorized tilt, for fast refocussing or to be used to add more dynamics.

The GLP X4 Bar has been specifically designed to give consistent pixel spacing between adjacent units. An important visual aspect whether in audience view, or not.

The X4 Bar is fitted with Powercon in and thru connectors for easy daisy chaining, rubber feet for floor mounting and ¼ turn omega attachments points for rigging flexibility.



Lighting design: Butch Allen





Photo credit: Cape Cross / Brainpool

Lighting design: Manfred Voss



Designed for consistent and uninterrupted output across units



DMX 5 pin and Neutrik Powercon (In & Thru)

## TECHNICAL DATA

### LIGHT SOURCE

impression X4 Bar 10:  
10 high power RGBW LEDs  
impression X4 Bar 20:  
20 high power RGBW LEDs  
50,000 hours life time

### OPTICAL SYSTEM

Motorized zoom system with  
7° to 50° beam angle  
Ultra fast zoom  
Quad color LEDs

### MOVEMENT

8 or 16 bit resolution  
Position feedback  
210° tilt in 1.5 sec  
High precision 3 phase  
stepping motor control

### SHUTTER / DIMMER

Continuous dimmer 0-100%  
Variable speed strobe of 1-10 Hz.  
Random strobe effect  
Pulse effects

### CONTROL

DMX-512 protocol  
Full pixel mapping control  
Internal color presets,  
and variable CTO control  
from 2,700K-10,000K  
Very quiet temperature  
controlled ventilation system  
Backlit graphic LCD  
menu with 4 buttons  
Battery operation of menu  
Over-temperature protection  
Color calibration feature

### POWER SUPPLY

Power consumption:  
impression X4 Bar 10:  
200VA (Watt)  
impression X4 Bar 20:  
450VA (Watt)  
Power input: Auto sensing  
100-240 VAC / 50-60Hz  
Fuse protection:  
Microfuse 20mm, T 5A

### CONNECTORS

DMX: XLR 5 pin  
Mains:  
Neutrik Powercon (In & Thru)

### OPERATING CONDITIONS

Maximum ambient  
temperature: 113°F / 45°C

### MOUNTING OPTIONS

Omega bracket attachment  
Attachment point for safety wire  
Built in rubber feet for  
floor mounting

### SHIPPING

Cardboard box  
X4 Bar 20 - 4 way tourpack  
complete with omega  
brackets and flight case  
X4 Bar 10 - 8 way tourpack  
complete with omega  
brackets and flight case

### HOUSING COLORS

Standard color is black  
For other colors please  
contact sales department

### DIMENSIONS

Length x Width x Height  
impression X4 Bar 10:  
9.7 x 9.4 x 3.9 inches /  
500 mm x 240 mm x 100 mm  
impression X4 Bar 20:  
39.4 x 9.4 x 3.9 inches /  
1000 mm x 240 mm x 100 mm

### NET WEIGHT

impression X4 Bar 10:  
17.6 lbs / 8 kg  
impression X4 Bar 20:  
32 lbs / 14.5 kg

# impression<sup>&</sup> Laser

The GLP impression Laser is a pure diode RGB moving head laser projector. It inspires all those who want to be one step ahead. Small, handy, light - thus the moving head laser show system can quickly be mounted on each stage.

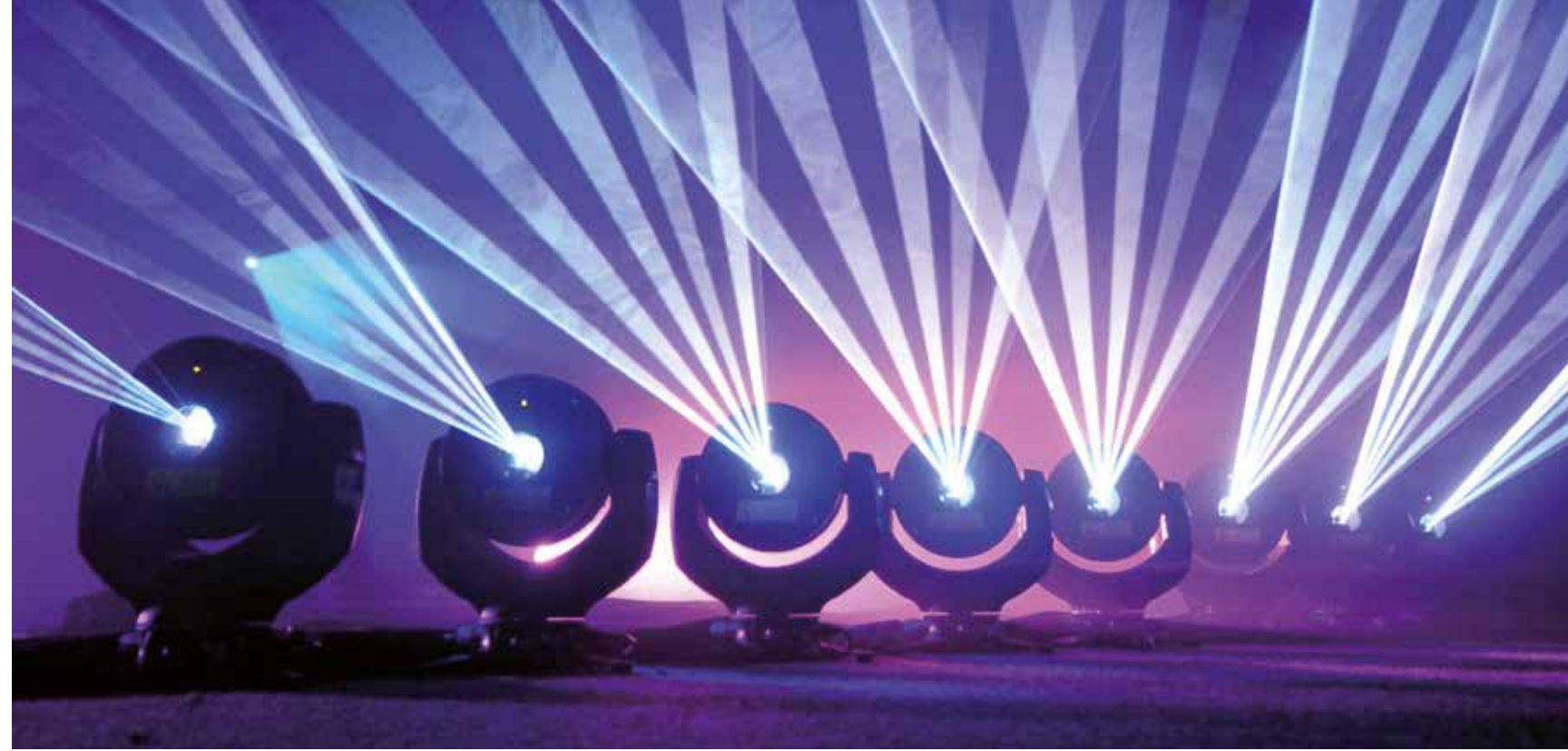
It blends inconspicuously, but quite certainly striking, in the concept of the show. Each laser show, whether beam show or laser graphics, is positioned precisely by the Moving Head on any projection screen. The Moving Head is controlled conveniently via DMX, the laser output via ILDA. Amazing and creative laser shows allows the professional and world famous laser show software LPS-RealTIME Pro.

The GLP impression Laser is available with 3 W and 6 W RGB.



POWERED BY

**LPS**  
LASERSYSTEME  
The brand made in Germany



## TECHNICAL DATA

### WAVELENGTHS

680 mW red @ 638 nm  
 1000 mW green @ 520 nm  
 1600 mW blue @ 445 nm

### DIVERGENCE

> 0.6 mrad  
 >4 mm diameter

### XY LASER SCANNER

35 kpps scanner  
 Max. 60° angle scanner safety

### CONTROL MODE

ILDA

### SOFTWARE CONTROL OPTION

LPS-RealTIME Pro

### MODULATION

Analog up to 50 Hz.

### POWER SUPPLY

Power consumption: 410 Watts  
 Power input: auto sensing  
 90-260V AC / 50/60 Hz.

### WARM UP TIME

5 minutes

### OPERATION TIME

Approx. 5,000 hours  
 (10,000 hours in laboratory)

### COOLING REQUIREMENTS

Forced air cooling

### OPERATING TEMPERATURE

Ambient temperature from  
 50°F / 10°C to 104°F / 40°C

### HEAD MOVEMENT

16 bit pan / tilt positioning  
 Position feedback  
 Maximum speed: 660° Pan  
 in 2 secs., 260° Tilt in 1 sec.  
 High precision 3 phase  
 stepper motor control

### CONNECTORS

DMX: XLR 5 pin  
 Mains: Neutrik Powercon  
 ILDA: 25 pin D connector  
 In and Out

### NET WEIGHT

22 lbs / 10 kg

### DIMENSIONS

Length x Width x Height  
 (Head vertical)  
 9.5 x 13 x 15 inches /  
 242 x 340 x 385mm



Photo credit: Ralph Larmann

Lighting design: Björn Hermann



impression<sup>®</sup>  
**SPOT & WASH ONE**

impression Spot One page 23 - 24  
impression Wash One page 25 - 26

# impression<sup>&</sup> Spot<sup>one</sup>

The impression Spot One represents a breakthrough in providing the worlds' first high powered RGB LED spot fixture. Light output is equivalent to a 700W discharge lamp and therefore truly useable in a wide range of applications. It contains a full feature set including 14 rotating and indexing gobos, motorized iris, rotating prism, focus, 9°-32° zoom, effects animation wheel, 16-bit pan and tilt, along with full range dimming with no color shift and electronic variable speed shutter.

The RGB LED source retains high efficiencies, as no fragile glass color system is required. To further minimise environmental impact, the baseless design reduces size and weight for rigging and transportation, whilst the fixture operates with near silent performance.

*"These are great lights that deliver consistent brightness through the color spectrum with all the capability of a yoke fixture.....We are just beginning to discover all their attributes, but from what we have been able to use them for so far, the results have been awesome. They are a great fixture with the anticipated ease of maintenance providing an additional benefit."*

Robert Wilson, Executive Director

**wfx** **NEW PRODUCT**  
**AWARDS**  
**TECHNOLOGY**  
**2 0 1 2**  
**WINNER**



Lighting design: Arata Isozaki & Associates of Shanghai

**5** Year  
Warranty  
on the Light Engine







Lighting design: Stefan Rausch

## TECHNICAL DATA

### LIGHT SOURCE

400 Watt RGB LED Chipset  
Average service life: 20,000 hours

### OPTICAL SYSTEM

Motorized Zoom: 9° – 32°  
Motorized Focus: 2m – infinity  
Full red, green and blue additive color mixing system  
Dimmer: Electronic 0-100%  
Shutter: Electronic shutter 0-10Hz

### ELECTROMECHANICAL EFFECTS

Gobo wheel 1: 7 gobos + open, rotating and indexable, interchangeable  
Gobo wheel 2: 7 gobos + open, rotating and indexable, interchangeable  
Effect wheel: Rotating and indexable effect wheel, different designs interchangeable  
Iris: High-speed iris 100%-4% (aperture time 0.2 sec)  
Prism: Rotating and indexable interchangeable 3-facet prism

### GOBOS

Outside diameter: 27mm  
Image diameter: max. 23mm  
Thickness for aluminium gobos: 0.5mm  
Thickness for glass gobos: 1.1 - 3mm

### MOVEMENT

8 or 16 bit resolution selectable  
540° Pan / 280° Tilt  
Position feedback  
High precision 3 phase stepper motor control

### CONTROL

USITT DMX 512 protocol  
Backlit graphic LCD menu with 2 illuminated buttons  
Over temperature protection  
Internal color presets

### POWER SUPPLY

Power consumption: Max. 450VA (Watt)  
Power Input: Auto sensing 100-240V AC, 50-60 Hz  
Fuse protection

### CONNECTORS

DMX Data: XLR 3 pin in/out  
DMX Data: XLR 5 pin in/out  
Mains: Neutrik Powercon

### OPERATING CONDITIONS

Maximum ambient temperature: 113°F / 45°C

### MOUNTING OPTIONS

Omega bracket attachment  
2 attachment points for safety wire  
Upright: tripod (supplied) with brackets for ratchet belt  
Hanging: M10 nut with lockable installation position for half couplers or other clamps  
Any orientation

### SHIPPING

Cardboard Box  
2 way tourpack complete with half couplers and flight case

### HOUSING COLORS

Standard colors are black, silver & white.  
For other colors please contact sales department.

### DIMENSIONS

Length x width x height (head vertical):  
18.6 x 9 x 24.3 in /  
472 x 229 x 618 mm

### NET WEIGHT

48.5 lbs / 22 kg

# impression<sup>&</sup> Wash<sup>one</sup>

Based around a Fresnel lens optical design, GLP's impression Wash One uses a powerful RGB LED engine to project with 8 or 16 bit control over each color allowing for incredibly delicate color changes or instantaneous bumps, with a field that remains even across the entire beam, no matter the size.

The electronic control of the LED engine allows full and smooth dimming over the entire range along with instant intensity snaps.

Flexibility is added to the Wash One with a continuous zoom range of 6° to 60°, along with a 'beam' mode, which allows a narrow output of just 3°. For added functionality, the Wash One is equipped with beam edge control, allowing a very soft edge to the beam or a more defined PC lens type edge. Finally, twin insertable and indexable blades allow for beam shaping of the output allowing even more accuracy and control.

The Wash One has been designed specifically for noise sensitive environments, and incorporates the latest technology for long term performance with minimal maintenance, including an LED engine that comes with a 5 year performance warranty.

As the Wash One has no base unit, its size and weight are minimal enabling easier rigging and transportation, yet still allowing the fixture to be rigged in any orientation.



Lighting design: Steven Cohen

**5** Year  
Warranty  
on the Light Engine



*"We chose these fixtures originally for the complete package of features and these certainly give us the color and contrast to cut through a very bright environment."*

*Greg Baker, Technical Director*



Lighting design: Jerry Appelt

*"The Wash One is a real all-rounder, you can use it to create crunchy beam colors, but also clearly-selected areas on the stage can be illuminated."*

Jerry Appelt, Lighting designer

## TECHNICAL DATA

### LIGHT SOURCE

400 Watt RGB LED Chipset  
Average service life: 20,000 hours

### OPTICAL SYSTEM

Full red, green and blue additive color mixing system  
Dimmer: Electronic dimmer 0-100%  
Shutter: Electronic high-speed shutter 0-10Hz

### ELECTROMECHANICAL EFFECTS

Motorized Zoom: 6° – 60°  
Beam mode w/ fixed angle 3°  
Indexable and rotatable beam shaper  
Beam edge control with soft / hard focus

### MOVEMENT

8 or 16 bit resolution  
540° Pan / 280° Tilt  
Position feedback  
High precision 3 phase stepper motor control

### CONTROL

DMX 512 protocol  
Backlit graphic LCD menu with 2 illuminated buttons  
Over temperature protection

### POWER SUPPLY

Power consumption: Max. 550VA (Watt)  
Power Input: Auto sensing 100-240V AC, 50-60 Hz  
Fuse protection

### CONNECTORS

DMX Data: XLR 3 pin in/out  
DMX Data: XLR 5 pin in/out  
Mains: Neutrik Powercon

### OPERATING CONDITIONS

Maximum ambient temperature: 113°F / 45°C

### MOUNTING OPTIONS

Omega bracket attachment  
2 attachment points for safety wire  
Upright: tripod (supplied) with brackets for ratchet belt  
Hanging: M10 nut with lockable installation position for half couplers or other clamps  
Any orientation

### SHIPPING

Cardboard Box  
2 way tourpack complete with half couplers and flight case

### HOUSING COLORS

Standard colors are black, silver & white.  
For other colors please contact sales department.

### DIMENSIONS

Length x width x height (head vertical):  
18.6 x 9 x 24.3 in/  
472 x 229 x 618 mm

### NET WEIGHT

48.5 lbs / 22 kg



*The* **HAMILT**



LTON

VOLKS | LICHT  
SPOT

VOLKS | LICHT Spot page 29 - 30

# VOLKS | LICHT SPOT

The GLP Volkslicht Spot features a 300W RGB LED engine which offers high output through an efficient optical system with clear gobo projection, even field distribution and smooth dimming without any color shift, all in a spot fixture format.

With near silent operation, the Volkslicht Spot is designed for venues and events keen to embrace the low maintenance and easy operational aspects of leading edge LED technology.

The feature set of the GLP Volkslicht Spot includes a motorized iris, rotating gobo wheel with 7 positions plus open, a static gobo wheel with 9 positions plus open, a rotating prism, and motorized focus all within a small body so that it can be placed discretely. The output features a beam angle of 15 degrees, with a light weight of just 33 lbs.



Lighting design: Robert Wilson

*"In trade shows and ballrooms you're hit with either low ceilings or 16ft height restrictions, and big movers obscure too much of the sight lines. Because these lights are small and bright they can really be superstars with 20% of the problems due to the low weight, size, and power draw."*

*Dave Barten, Lighting designer*



Lighting design: Jason Reberski



## TECHNICAL DATA

### LIGHT SOURCE

300 Watt RGB LED Light Engine  
20,000 hours lifetime

### OPTICAL SYSTEM

Beam angle: 15°  
Motorized Focus: 2m – infinity  
Full red, green and blue  
additive color mixing system

### ELECTROMECHANICAL EFFECTS

Motorized iris  
Gobo wheel 1: 7 gobos + open,  
rotating and indexable,  
interchangeable Gobo wheel  
2: 11 gobos + open, fixed  
Prism: Rotating and indexable  
interchangeable 3-facet prism

### GOBOS

Outside diameter: 23mm  
Image diameter: max. 19mm  
Thickness for aluminium  
gobos: 0.5mm  
Thickness for glass gobos:  
1.1 - 3mm

### SHUTTER / DIMMER

Dimmer: Electronic  
dimmer 0-100%  
Shutter: Electronic shutter 1-25Hz  
Random strobe effect  
Pulse effects

### MOVEMENT

8 or 16 bit resolution  
selectable  
540° Pan / 280° Tilt  
Position feedback  
High precision 3 phase  
stepper motor control

### CONTROL

DMX-512 protocol  
Internal color presets, and  
color wheel function  
Variable CTO control  
from 2,700K-10,000K  
Very quiet temperature  
controlled ventilation system  
Over-temperature protection  
Backlit graphic LCD menu

### POWER SUPPLY

Power consumption:  
Max. 400 Watt  
Power Input: Auto sensing  
100-240V AC, 50-60 Hz  
Fuse protection

### CONNECTORS

DMX: XLR 5 pin and 3 pin  
Mains: Neutrik Powercon  
(In & Thru)

### OPERATING CONDITIONS

Maximum ambient temperature:  
113°F / 45°C

### MOUNTING OPTIONS

M10 sockets for half  
coupler or other clamp

### SHIPPING

Cardboard box  
4 way tourpack complete  
with half couplers and flight case

### HOUSING COLORS

Standard colors are  
black, silver & white.  
For other colors please  
contact sales department.

### DIMENSIONS

Length x width x height  
(head vertical):  
11.2 x 12.5 x 21.1 in /  
286 mm x 318 mm x 538 mm

### NET WEIGHT

33 lbs / 15 kg



Lighting design: Matt Shimamoto





## ***Creation II*** **SERIES**

Creation II 4096  
Creation II 1024  
Fader & Button Wing  
Creation OnPC

page 33 - 34  
page 35 - 36  
page 37  
page 38

# Creation II

4096

The Creation II - 4096 controls up to 2048 channels over DMX or 4096 channels over ArtNet. The console comes equipped with a comprehensive fixture library and a powerful fixture setup wizard, which makes fixture configuration simple and efficient. The integrated library editor allows you to add new fixtures or update existing ones at any time – even during the show.

The Creation II – 4096 also supports on the fly replacement of complete fixture types, which is particularly handy when an already programmed fixture of one brand needs to be replaced by another. All updates and backups are done simply via the in-built USB ports.

As for the hardware, the Creation II – 4096 is based on a fanless industrial single board computer, which runs from a solid state disk. Together with the auto sensing fanless power supply, we eliminated any mechanical parts inside the console, greatly increasing the robustness and reliability of the hardware. In combination with our embedded Linux operating system, which has a boot time of less than 60 seconds, the console delivers maximum stability and reliability.

The combination of the comprehensive feature set, the compact hardware design and a sensible market based price, make the Creation II – 4096 an excellent choice for all shows and venues with up to 320 lighting fixtures, with a maximum of 4096 DMX channels or 8 ArtNet universes.

The Creation II – 4096 features advanced functionality in a number of areas for such a small and compact console. One of these is the multi-functional button panel which gives full flexibility without needing to invest in additional hardware.

4 panels are included in the standard desk configuration with each of these panels having 16 buttons, along with a graphical status display. Using the control section, you can reconfigure the behavior of each of the 4 button panels at any time. You can



individually choose options such as fixture and group selection, playback of cuelists, effects activation, preset recall or even macro playback, amongst others.

This easy and fast re-configuration makes it possible to quickly adapt the consoles' user interface to any demands during the show. It doesn't matter whether you enjoy having dozens of extra buttons for programming or if you prefer having up to 64 additional cuelists at your fingertips when it comes to showtime – any configuration can be achieved within seconds.



## TECHNICAL DATA

### HARDWARE SPECIFICATION

Internal 5.7" full color touchscreen  
4 x high-endurance encoders  
11 x ALPS faders  
10 x Genuine digitast flash buttons  
5 x LC displays  
189 x Cherry buttons with tactile feedback  
295 x Colored status LEDs  
Single level cell industrial grade solid state disk  
Completely fanless design  
Weight: 37 lbs/ 16.7 kg  
Dimensions: 27 x 17.7 x 5.4 in / 685 x 450 x 135 mm  
Tourpack Dimensions: 35.4 x 22.9 x 8.5 in/  
901 x 584 x 216 mm

### CONNECTIVITY

4 x DMX output (fully isolated, 5 pin XLR, RDM ready)  
1 x DMX input (fully isolated, 5 pin XLR)  
1 x gigabit ethernet through ethercon connector  
1 x external DVI monitor port (up to 1920 X 1200)  
2 x USB 2.0 port  
Support for USB mouse/keyboard/touchscreen  
Midi in/out/thru  
Audio input (fully isolated, 6,3mm Jack)  
SMPTE input (3 pin XLR)  
6 x switch input (9 pin sub-d)  
Power input: Auto sensing 100-240V,  
50/60 Hz, Neutrik Powercon  
Up to 5 optional fader and button wings may be connected

### SOFTWARE SPECIFICATION

Free OnPC software available  
Based on custom-built embedded Linux  
4096 DMX channels sent ArtNet and 2048 channels sent by DMX  
Internal 32-bit high precision computation  
Easy show setup  
Powerful fixture library  
Editor including virtual dimmer/shutter functions  
Easy fixture setup and patching  
Function based storage enabling subsequent repatch or even replacement of fixtures  
Fully selective programming concept including selective presets, cuelists and effects  
Powerful fanning engine (grouping/buddying)  
Dedicated media server section  
Powerful networking options including full tracking backup and multi user modes  
Linking of cues on effects cuelists and scenes Powerful cuelist options including tracking, HTP/LTP, looping and a lot more  
No limitation on the number or type (HTP/LTP) of simultaneously running memories  
Powerful and comprehensive effects generator, which operates on any parameter  
Virtually unlimited number of fader pages  
Template page functionality  
Fader can be connected dynamically to almost any function including cuelist, effects, submaster & more  
Group sub-selection (even, odd, first/next, previous, x'th out of y)  
Standard keypad for fast programming  
Live programming  
Backup to USB memory sticks  
Software update via USB memory sticks, network or internet

# Creation II

1024

The Creation II 1024 controls up to 1024 channels over DMX and ArtNet. The console comes equipped with a comprehensive fixture library and a powerful fixture setup wizard, which makes fixture configuration simple and efficient. The integrated library editor allows you to add new fixtures or update existing ones at any time – even during the show.

The Creation II 1024 also supports on the fly replacement of complete fixture types, which is particularly handy when an already programmed fixture of one brand needs to be replaced by another.

More flexibility is offered as standard with the control faders also being configurable by the user to match their preferred setup. Whether it be as intensity submasters for fixture groups, effect or cuelist controls, or even master speed timing control, the choice is yours.

As for the hardware, the Creation II 1024 is based on a fanless industrial single board computer, which runs from a solid state disk. Together with the auto sensing fanless power supply, we eliminated any mechanical parts inside the console, greatly increasing the robustness and reliability of the hardware.

In combination with our embedded Linux operating system, which has a boot time of less than 60 seconds, the console delivers maximum stability and reliability. The combination of the comprehensive feature set, the compact hardware design and a sensible market based price, make the Creation II 1024 an excellent choice for all shows and venues with a maximum of 1024 channels over DMX and ArtNet. Despite its smaller size, the Creation II 1024 makes it up in powerful functionality, introducing areas such as the multi-function button panel which gives full flexibility without needing to invest in additional hardware.

2 button panels are included in the standard desk configuration with each of these panels having 16 memory buttons, along with a graphical status display. Using the control section, you can reconfigure the behavior of each of the 2 operation panels at any time. You can individually choose options such as fixture and group selection, playback of cuelists, effects activation, preset recall or even macro playback, and many more. This easy and fast re-configuration makes it possible to quickly adapt the consoles' user interface to any demands during the show.

It doesn't matter whether you enjoy having dozens of extra buttons for programming or if you prefer having up to 32 additional cuelists at your fingertips when it comes to showtime – any configuration can be achieved within seconds.

All software updates and show backups are done simply via the in-built USB ports.





## TECHNICAL DATA

### HARDWARE SPECIFICATION

Internal 5.7" full color touchscreen  
4 x High-endurance encoders  
6 x High-endurance potentiometers  
11 x ALPS faders  
10 x Genuine digitast flash buttons  
2 x LC-displays  
111 x Cherry buttons with tactile feedback  
199 x Colored status LEDs  
Industrial single-board computer  
Single-level-cell industrial grade solid state disk  
Completely fanless design  
Weight: 28 lbs/ 12.7 kg  
Dimensions: 21 x 17.7 x 6.3 in / 535 x 452 x 160mm

### CONNECTIVITY

2 x DMX output (fully isolated, 5 pin XLR, RDM ready)  
1 x Gigabit ethernet via ethercon connector  
1 x external DVI monitor port (up to 1920 X 1200)  
2 x USB 2.0 port support for USB mouse/  
keyboard/touchscreen  
Midi in/out/thru  
Symmetric audio and SMPTE time-  
code input (3 pin XLR)  
6 x switch input (9 pin sub-d)  
Up to 5 fader and 5 button wings  
may be connected  
Power input: Auto sensing 100-240V,  
50/60 Hz, Neutrik Powercon

### SOFTWARE SPECIFICATION

Free OnPC software available  
Based on custom-built embedded Linux  
1024 DMX channels sent by ArtNet and DMX  
Internal 32-bit high precision computation  
Easy show setup  
Powerful fixture library editor including virtual dimmer / shutter functions  
Easy fixture setup and patching  
Function based storage enabling subsequent repatch or even replacement of fixtures  
Fully selective programming concept including selective presets, cuelists and effects  
Powerful fanning engine (grouping/buddying)  
Powerful networking options including full tracking backup and multi user modes  
Linking of cues on effects, cuelists and scenes  
Powerful cuelist options including tracking, HTP/LTP, looping and a lot more  
No limitation on the number or type (HTP/LTP) of simultaneously running memories  
Powerful and comprehensive effects generator, which operates on any parameter  
Virtually unlimited number of fader pages  
Template page functionality  
Fader can be connected dynamically to almost any function including cuelist, effects,  
submaster and more  
Group sub-selection (even, odd, first/next, previous, x'th out of y)  
Live programming  
Backup to USB memory sticks  
Software update via USB memory sticks, network or internet

## Creation BUTTON WING

If additional button control is needed for your show, then the Creation II, Button Wing is the solution of choice. The Button Wing consists of 2 button panels which may be configured in the same way as the standard in-built button panels on the Creation II consoles. The Button Wing connects directly to any Creation II - Series desk, or the Creation II OnPC, via USB cable and is entirely self powered, and self contained.

### TECHNICAL DATA

#### HARDWARE SPECIFICATIONS

2 x LC Displays  
38 x Cherry buttons with tactile feedback  
96 x Colored status LEDs  
Connects via USB  
USB powered  
Weight: 6.4 lbs / 2.9 kg  
Dimensions: 12.2 x 8.7 x 3.4 in / 310 x 221 x 86 mm

## Creation FADER WING

Offering ten additional master faders, the Creation II, Fader Wing is the perfect solution for when you need some additional fader control for your show. Each additional master control consists of a fader, two cherry buttons and a short travel flash button. The Fader Wing connects directly to any Creation II,-Series desk, or the Creation II OnPC, via a USB cable and is entirely self powered, and self contained.

### TECHNICAL DATA

#### HARDWARE SPECIFICATIONS

10 x ALPS faders  
10 x Short travel highendurance flash buttons  
25 x Cherry buttons with tactile feedback  
30 x Colored status LEDs  
Connects via USB  
USB powered  
Weight: 7.0 lbs/ 3.2 kg  
Dimensions: 12.2 x 8.7 x 3.4 in / 310 x 221 x 86 mm



# Creation ON PC

The Creation II OnPC software brings the full functionality of the Creation II series to your PC or MAC.

The Creation OnPC version contains the full feature set of the Creation II range of consoles while maintaining the same easy to use user interface. This makes it particularly suited for anybody wishing to pre-program a show without a physical desk.

It is possible to create and edit any show or fixture library inside the OnPC software and quickly transfer the result to a physical console.

The OnPC Software even sends out one universe of ArtNet for free without the need for any additional hardware!

Thanks to its Virtual Machine approach it runs on any operating system including MacOS, Windows and Linux. The software is free of charge and may be downloaded from our dedicated Creation II support website at: [www.creationforum.de](http://www.creationforum.de)



Sample screenshot

# ACCESSORIES

## AIR DOMES

The GLP impression Air Domes provide a secure enclosure for fixtures that need to be protected from the environment in an IP54 package that is fast and easy to set up and remove.

With three sizes available, even small fixtures can remain unobtrusive, yet safely protected from rain, snow and other outdoor elements.

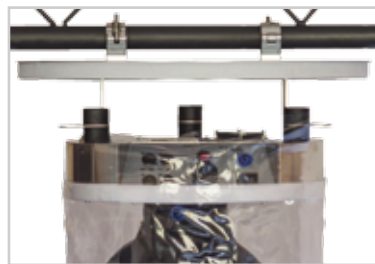
Auto sensing power input along with both 3 pin and 5 pin XLR data connectors allow the Air domes to be used with a wide variety of fixtures on the market, and around the world.

Standard features on all Air Dome models include sensor controls to monitor air pressure inside the dome, with easily visible warning LED's, holders for ground anchors, separate power controls for the fixture and the fan, along with 4 selectable fan speeds.

Each Air Dome can be floor mounted or hung down from a truss, and feature safety wire points.

When floor mounted, the Air Dome uses its solid rubber feet that keep connectors away from the ground and offer a firm and stable footing.

GLP Air Domes come complete with clear protective covers in respective sizes which attach quickly via a solid, reusable hook and loop system that requires no tools to setup, and allows the unit to take up very little space when being transported or stored.



Optional hanging kit protects fixtures and connections



## TECHNICAL DATA

### DATA CONNECTIONS

DMX: 5 pin and 3 pin XLR in and out

### POWER SUPPLY

Fan Power consumption: 410 Watts  
Power input: auto sensing 100-240V AC / 50-60 Hz.  
Neutrik Powercon

### PROTECTION RATING

IP 54

### WEIGHT

AIR DOME 400  
14.3 lbs. / 6.5 kg  
AIR DOME 600  
23.1 lbs. / 10.5 kg

### DIMENSIONS

AIR DOME 400  
Length x Width x Height (with cover)  
15.9 x 15.9 x 26 inches / 400 x 400 x 660mm  
Envelope size inside height: 20 inches / 510mm

### AIR DOME 600

Length x Width x Height (with cover)  
23.8 x 23.8 x 41 inches / 605 x 605 x 1040mm  
Envelope size inside height: 32 inches / 810mm

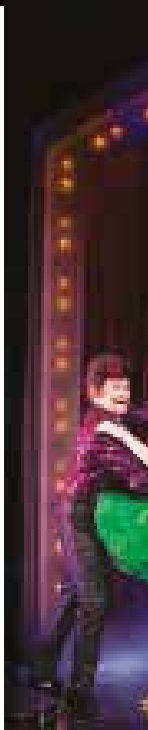
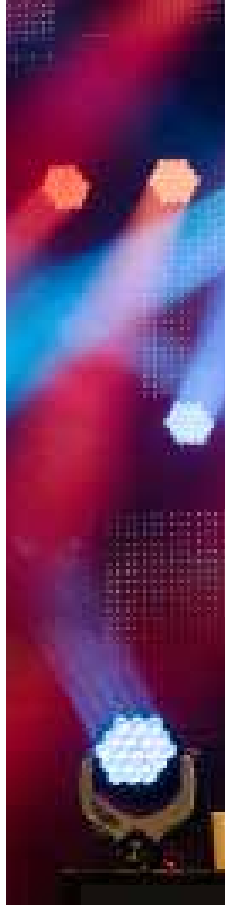


Photo credit: Todd Kaplan







Photo credit : Bree Kristel Clarke Lighting design: Steven Smith



Lighting design: Okulus



Photo credit : Douglas Kirkland Lighting design: Hugh Vanstone



Lighting design: Francesco Calvi



Lighting design: Baz Holpin/ Chris Nyfield



Lighting design: Lars Muresch



Photo credit: Ralph Larmann

Lighting design: Al Gurdon





— since 1994 —

**GLP German Light Products, Inc.**

10945 Pendleton Street  
Sun Valley, CA 91352  
Tel: +1 818 767 8899  
Fax: +1 818 279 9898  
usa@glp.de

**GLP Latin America**

Argentina  
Tel: + 54 911 5174 2332  
p.hald@glp.de

**GLP Asia, Ltd.**

Hong Kong  
Tel: + 852 3151 7730  
Fax: + 852 3151 7731  
asia@glp.de

**GLP Germany, GmbH**

Karlsbad  
Tel: + 49 72 48 927 190  
Fax: +49 72 48 927 1930  
info@glp.de

---

**[www.germanlightproducts.com](http://www.germanlightproducts.com)**